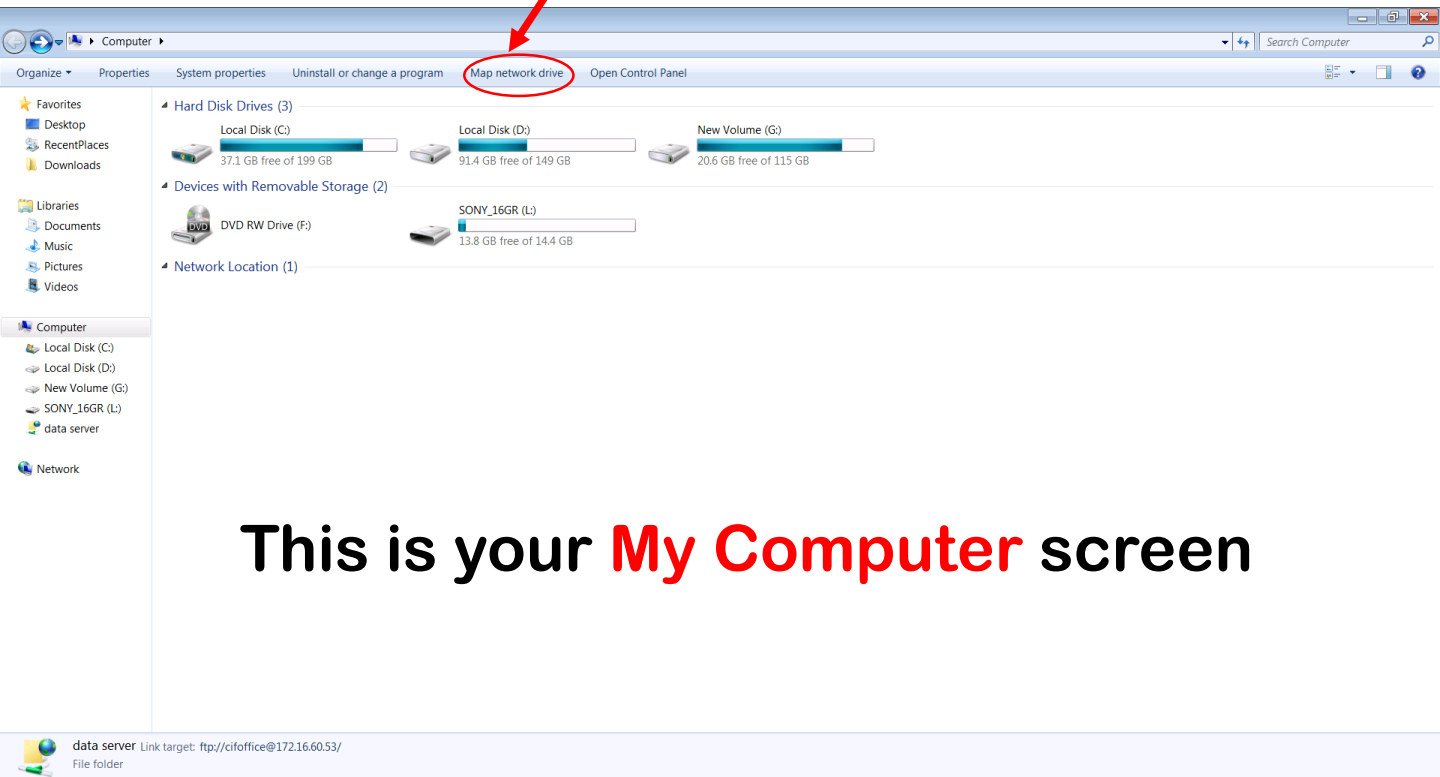
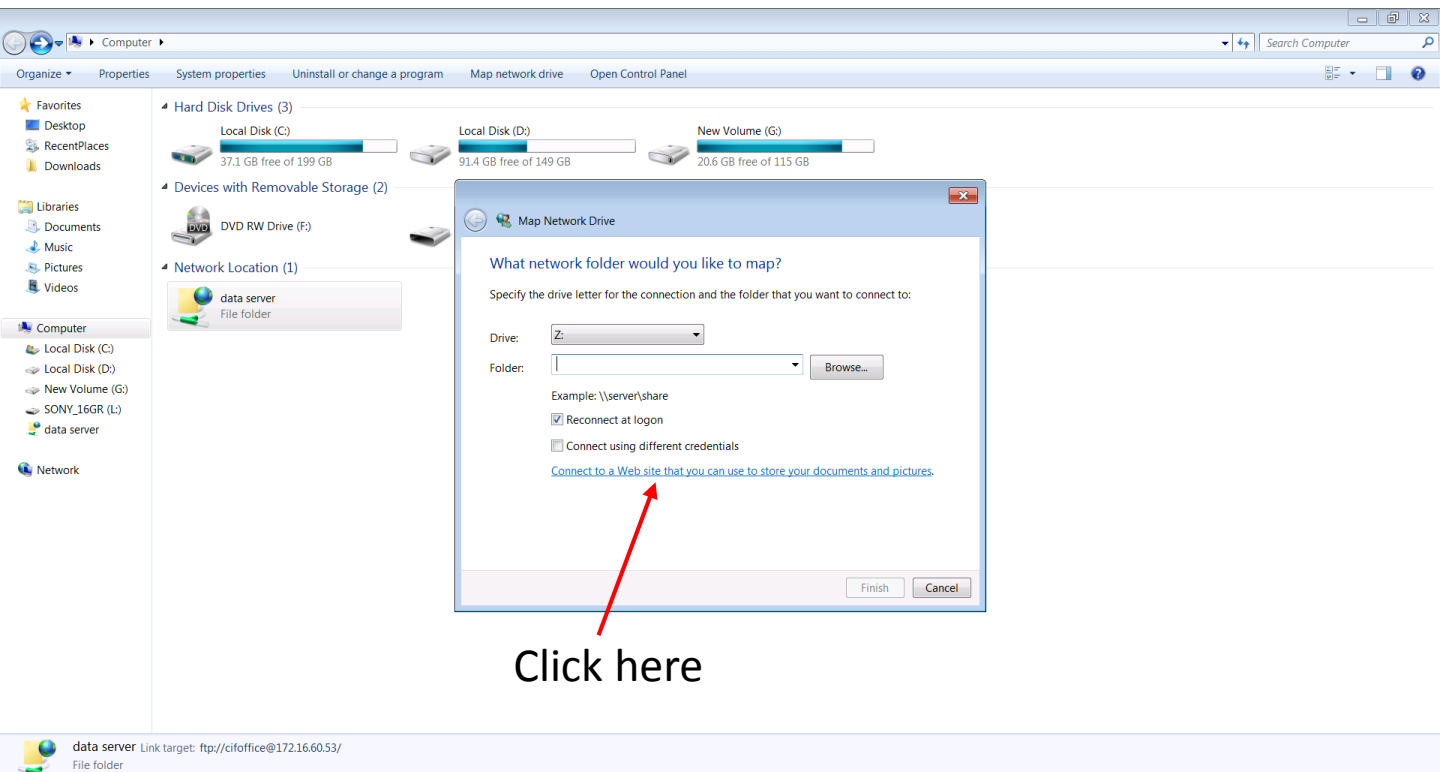
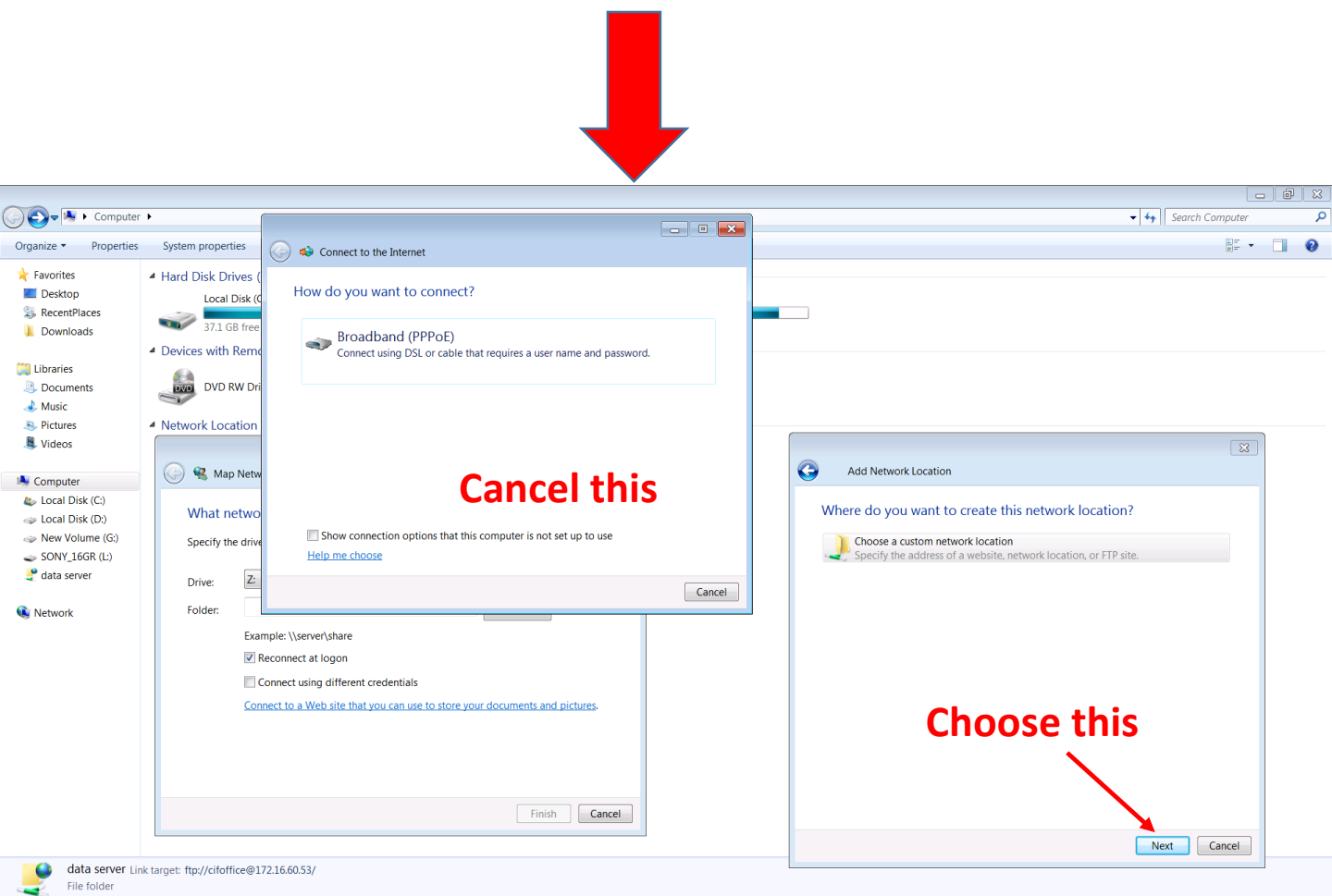
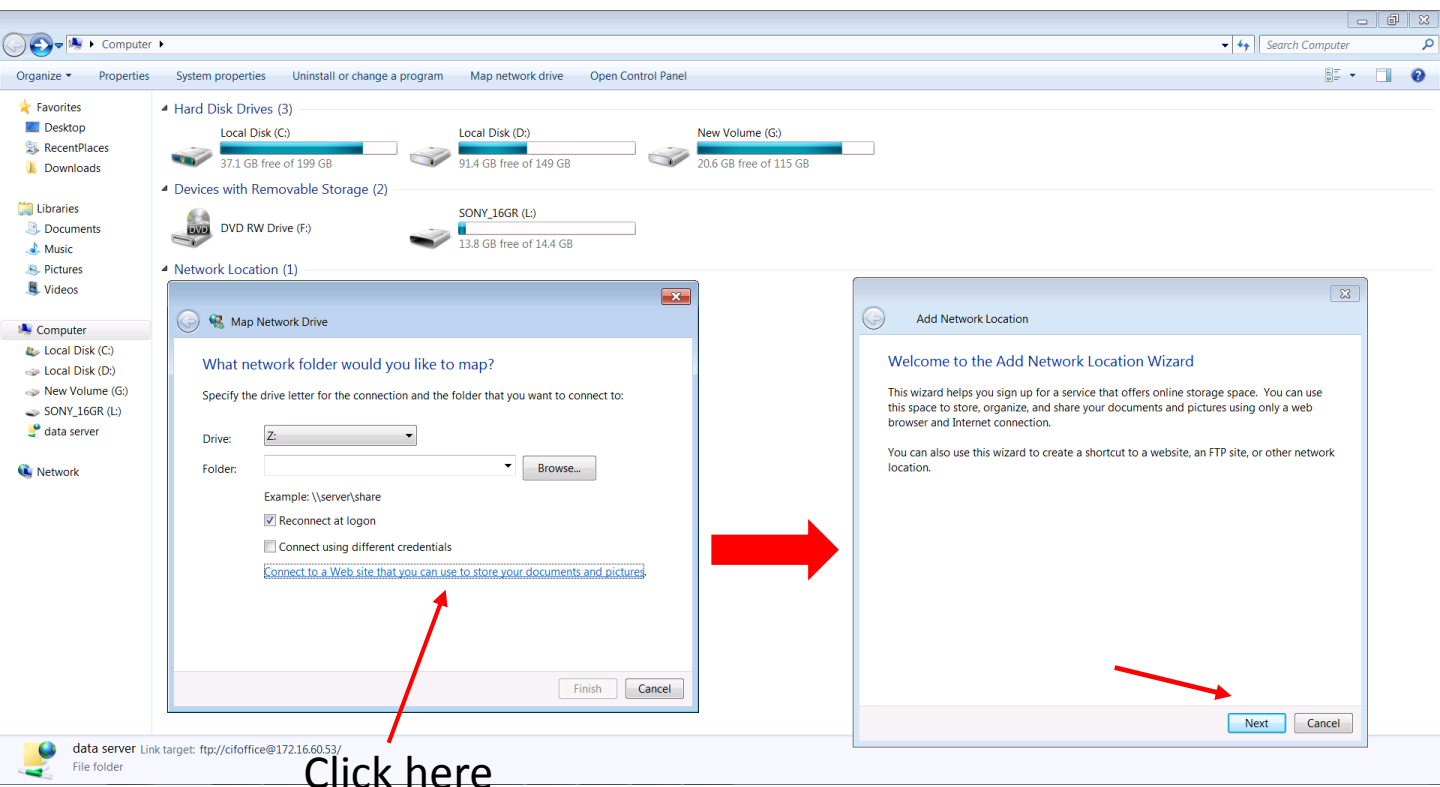


Click here



This is your **My Computer** screen





Computer > Properties > System properties > Uninstall or change a program > Map network drive > Open Control Panel

Hard Disk Drives (3)

- Local Disk (C:) 37.1 GB free of 199 GB
- Local Disk (D:) 91.4 GB free of 149 GB
- New Volume (G:) 20.6 GB free of 115 GB

Devices with Removable Storage (2)

- DVD RW Drive (F:)
- SONY\_16GR (L:) 13.8 GB free of 14.4 GB

Network Location (1)

Map Network Drive

What network folder would you like to map?

Specify the drive letter for the connection and the folder that you want to connect to:

Drive: Z: Folder: Browse...

Example: \\server\share

☒ Reconnect at logon

☐ Connect using different credentials

[Connect to a Web site that you can use to store your documents and pictures.](#)

Finish Cancel

Add Network Location

Specify the location of your website

Type the address of the website, FTP site, or network location that this shortcut will open.

Internet or network address: <http://172.16.60.53> Browse...

[View examples](#)

Next Cancel

data server Link target: ftp://cifoffice@172.16.60.53/  
File folder

Enter the address as shown and Then click next



Computer > Properties > System properties > Uninstall or change a program > Map network drive > Open Control Panel

Hard Disk Drives (3)

- Local Disk (C:) 37.1 GB free of 199 GB
- Local Disk (D:) 91.4 GB free of 149 GB
- New Volume (G:) 20.6 GB free of 115 GB

Devices with Removable Storage (2)

- DVD RW Drive (F:)
- SONY\_16GR (L:) 13.8 GB free of 14.4 GB

Network Location (1)

Map Network Drive

What network folder would you like to map?

Specify the drive letter for the connection and the folder that you want to connect to:

Drive: Z: Folder: Browse...

Example: \\server\share

☒ Reconnect at logon

☐ Connect using different credentials

[Connect to a Web site that you can use to store your documents and pictures.](#)

Finish Cancel

Add Network Location

Specify a User Name and Password if Required

Most FTP servers allow users to log on anonymously with limited access to the server. Do you want to log on anonymously?

☐ Log on anonymously

User name: cifoffice

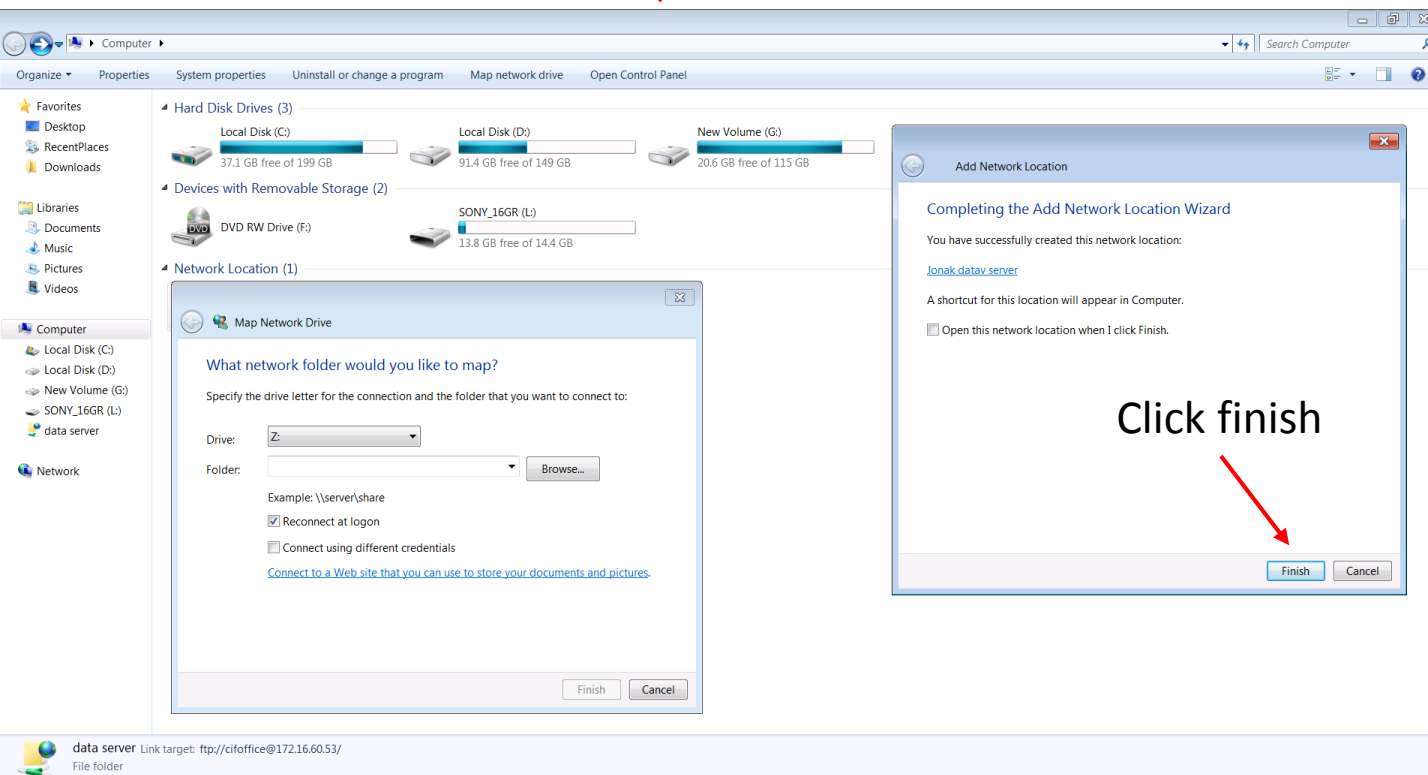
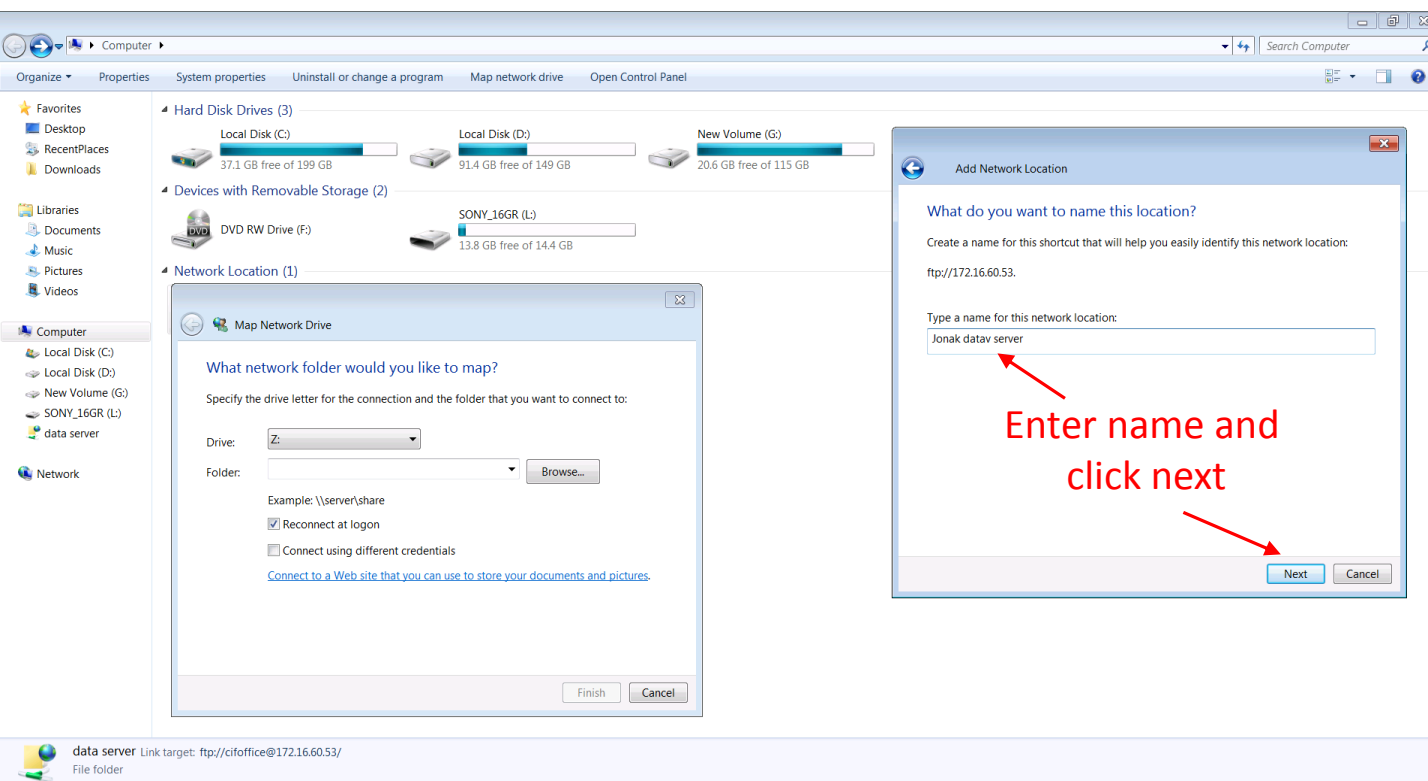
You will be prompted for your password when you connect to the FTP server.

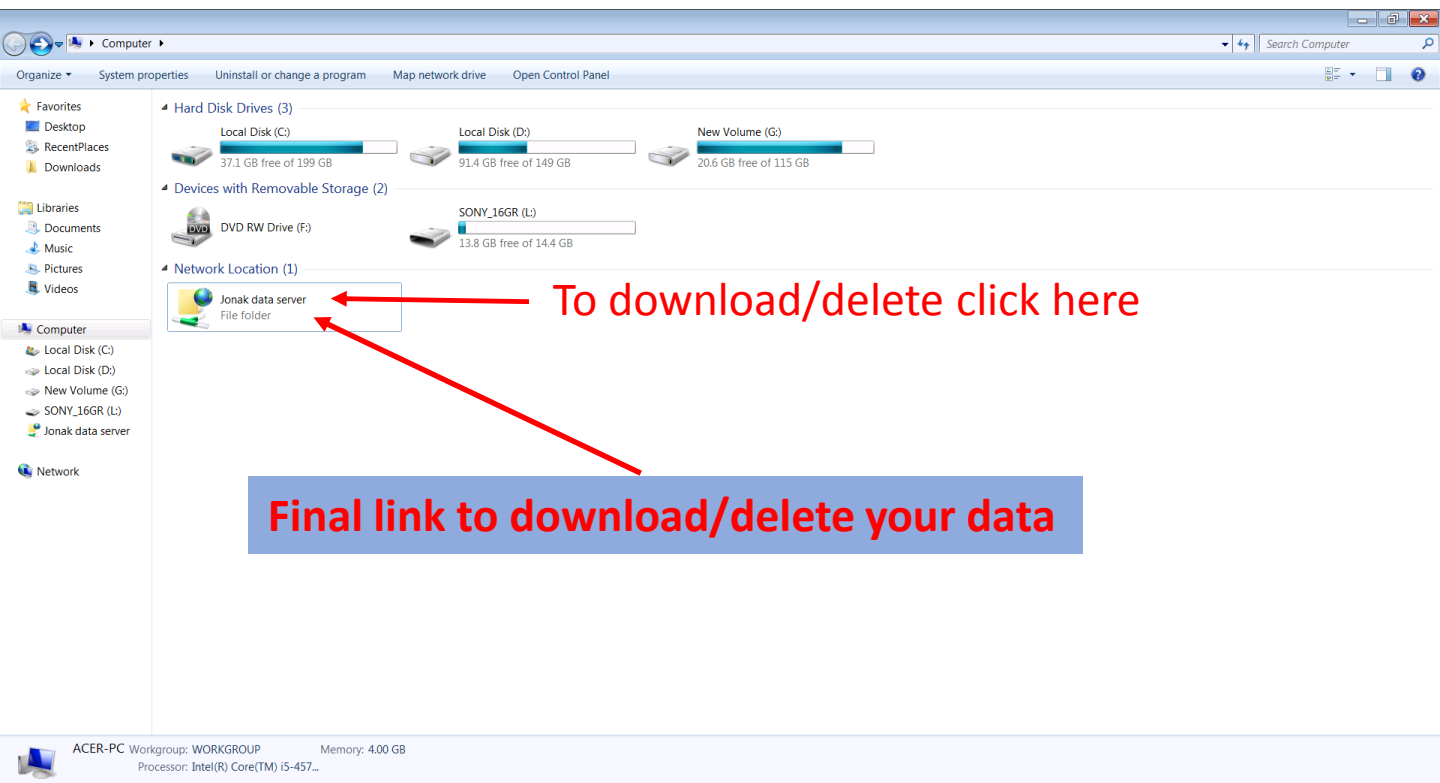
Next Cancel

data server Link target: ftp://cifoffice@172.16.60.53/  
File folder

Uncheck this

Give Jonak supervisor user id





**AFTER CLICKING THE LINK PLEASE  
PROVIDE THE JONAK USER ID  
CREDENTIALS  
TO ACCESS YOUR RESPECTIVE ACCOUNTS**